

# Communications Plan Checklist

What tactics do you plan to use to promote your ReCollect products to your residents?

- ☐ Media Release
  - ☐ Email Signatures
  - ☐ Print Calendars
  - ☐ Flyers
  - ☐ Newsletter
  - ☐ Posters
  - ☐ Advertising
  - ☐ Social Media
  - ☐ Community Events
  - ☐ Customer Service Integration
  - ☐ Sticky Notes
  - ☐ Sorry Stickers
  - ☐ Collection Vehicle Signage
  - ☐ Operations Vehicle Signage
  - ☐ Digital Displays
  - ☐ Contests
  - ☐ Email Blast
  - ☐ Official Launch Event
  - ☐ Other \_\_\_\_\_
- We'd love to hear about your other ideas  
- email [support@recollect.net](mailto:support@recollect.net)!

# WHAT GOES IN THE RECYCLING BIN?



## Recycling tips

- Rinse clean. Remove food, liquids, contents before recycling.
- Separate plastic bags/over-wrap from newspapers, flyers, magazines, water/soft drink cases. Recycle separately.

## RECYCLING – YES ✓

### Glass

- Bottles, jars (lids on)

### Plastics

- Tubs, lids
- Clear food containers/clamshells
- Disposable plates, cups, berry containers (black items are garbage)
- Detergent, hand soap, shampoo bottles (lids, sprayers, pumps – on tight)
- Beverage bottles (lids on)
- Cat litter tubs with plastic handles
- Plastic paint pails (empty; remove metal handles, handles are garbage)
- Clear compact disk cases (empty; black cases are garbage)



Note: Black plastic items cannot be recycled (put in garbage)

### Soft, stretchy plastics

- Milk bags (inner pouches, outer bag)
- Bread bags (non-foil)
- Sandwich bags (e.g. re-sealable bags)
- Bulk food/produce bags
- Frozen fruit/vegetable bags
- Grocery/retail shopping bags
- Dry cleaning bags
- Newspaper/flyer, magazine bags
- Garden soil/manure/compost/road salt bags
- Diaper/feminine hygiene outer bags
- Over-wrap from toilet paper, napkins, paper towels, water/soft drink cases



### Metal

- Aluminum/steel cans (place lid in can and pinch closed)
- Aluminum trays, burner liners, pie plates, roasting pans
- Aerosol cans (empty; lids on)
- Paint cans (empty; remove lids and recycle separately)



### Paper

- Bags, advertising mail, fine paper, envelopes (including window)
- Shredded paper (put in clear plastic bag, tie closed)
- Gift wrap, cards (no ribbons, bows, foil wrap)
- Newspapers, flyers, directories, magazines, catalogues (remove over-wrap; recycle separately)
- Soft/hard cover books



### Cardboard

- Boxboard (e.g. cereal, tissue, detergent, shoe; remove liners, flatten)
- Corrugated cardboard (clean, unwaxed, flattened; pizza boxes must be empty; remove over-wrap from water/soft drink cases, recycle separately)
- Rolls (toilet, paper towel, wrapping paper)
- Milk/juice cartons and boxes (straws are garbage)
- Cans (e.g. chips, nuts, frozen juice – place metal end in can and pinch closed; pull-off strips are garbage)



### Foam polystyrene

- Foam food and protective packaging (e.g. drinking cups, egg cartons, meat trays, takeout food containers, electronic packaging)

Please visit [www.frenchriver.ca](http://www.frenchriver.ca) to wind out new interactive Waste Wizard and Sorting Game



# Put Waste in its Place

## Recycling

### Containers

Rinse to remove residue



Plastic bottles, jugs (lids on)



Milk, juice, soup cartons and boxes (flatten)



Plastic food jars, tubs, lids



Glass bottles, jars (metal lids are garbage)



Aluminium trays, pie plates, roasting pans

Metal, cardboard food and beverage containers (place lid inside can and pinch closed)



Plastic retail shopping bags (put bags in one bag and tie handles together)



Foam polystyrene



Clear plastic "clam shell" containers

### Paper

Not contaminated with food or chemicals



Boxboard (flatten; remove liners, plastic windows and put in garbage)



Corrugated cardboard (flatten)



Fine paper



Books, telephone directories



Newspapers, flyers, magazines



## Waste

Please do not contaminate recycling or the Green Bin with these items; these belong in garbage.



Plastic cutlery, stir sticks



Plastic over-wrap, bubble wrap



Baggies, liner bags (cereal, cookies, crackers)



Straws, plastic lids



Black plastic takeout containers



Coffee cups, lids, sleeves



Drink pouches



Dryer and disposable mop sheets, baby wipes, make-up pads, cotton tipped swabs, dental floss



Cigarette butts and ashes



Plastic or foil bags, wrap, trays



Popsicle sticks, toothpicks, wood chips, pencil shavings



Gum packages, blister packs



Light bulbs (not CFLs), dishes, drinking glasses



Hair, pet hair, feathers, nail clippings, dryer lint



Candles, candle wax



## Compost

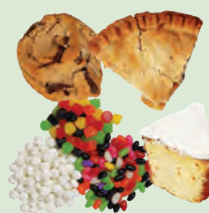
- Do not use biodegradable bags.
- Take food items out of plastic bags/wrap.
- Please be safe when composting and watch for wild life.



Bread, toast, cereal, baked goods, pizza



Fruit



Cake, cookies, pie, muffins, candies



Coffee grounds, filters, tea bags



Dairy products, eggs and shells



Pasta, couscous, potatoes, rice, oatmeal, flour, grains



Meat, fish, shellfish



Nuts, nutshells



Vegetables, corn cobs and husks, pumpkins, salads



House plants



Paper napkins, paper towels, facial tissues (not soiled with chemicals or make-up)



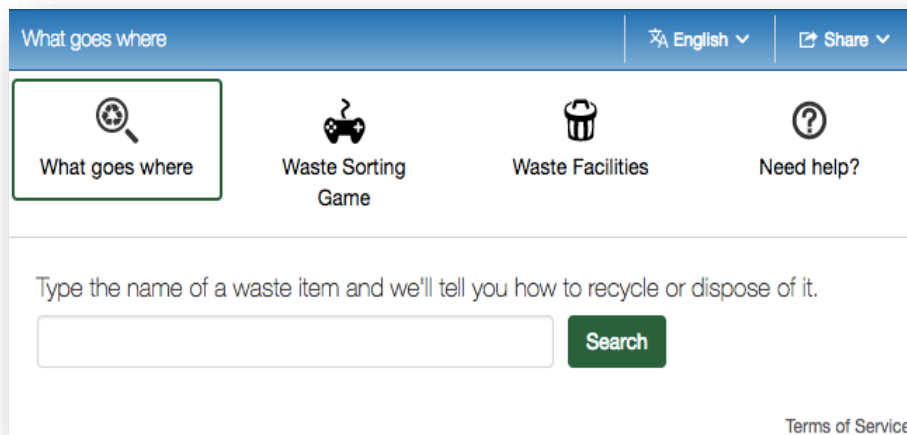
This poster is a quick reference. Not everything that goes in recycling or garbage is listed here.

Not sure where something goes? Check: Our NEW municipal website and WASTE WIZARD ([www.frenchriver.ca](http://www.frenchriver.ca))



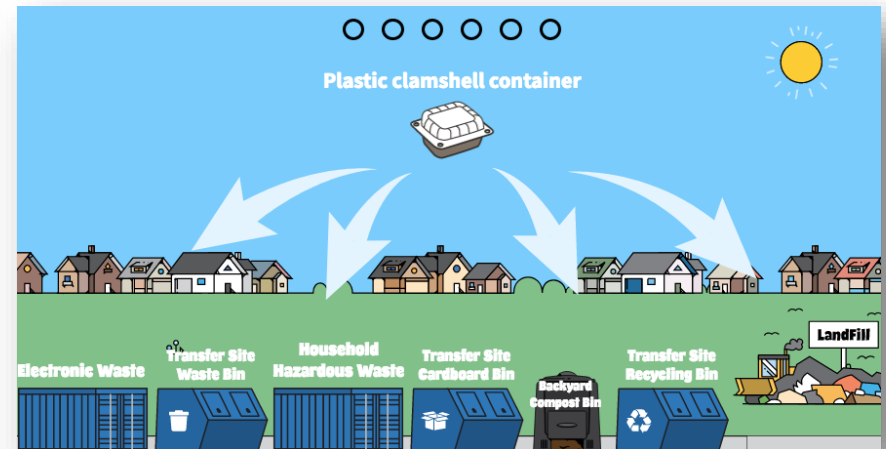
# Let us help you Recycle!

Visit our **NEW** Website for these interactive App's that help you know where to sort your recycling.



## Waste Wizard

Look up waste materials and learn if they can be recycled, composted or disposed of.



## Waste Sorting Game

Play our interactive game: sort your waste, create a digital park, and print a certificate of completion!





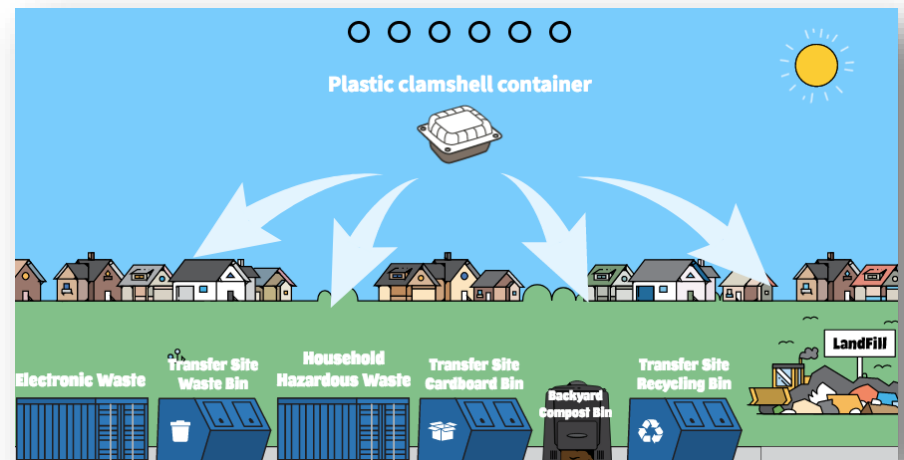
# Recycle today, for a better tomorrow

For information on Recycling, visit our **NEW** Website for our interactive App's.



## Waste Wizard

Look up waste materials and learn if they can be recycled, composted or disposed of.



## Waste Sorting Game

**Play our interactive game**

- ✓ Sort the waste items
- ✓ Create a digital park
- ✓ Print your certificate for a PRIZE at the Municipal Office!



Be part of the solution!

Not part of the problem...

# Help keep our community clean!

For information on **Recycling** & **Waste Disposal** visit our **NEW** Website and look for our interactive App's.

## Waste Wizard

What goes where

English

Share

What goes where

Waste Sorting Game

Waste Facilities

Need help?

Type the name of a waste item and we'll tell you how to recycle or dispose of it.

Search

Terms of Service

&

## Sorting Game

